



Eva Crane Trust

ECTD_041 (ii)

- TITLE:** A beekeeping visit to the Soviet Union.
(Picture library supplement)
- SOURCE:** *Bee World* 44 (2) 48 – 76
- DATE:** 1963

BEE RESEARCH ASSOCIATION PICTURE LIBRARY
SUPPLEMENT No. 2

BEEKEEPING IN THE SOVIET UNION

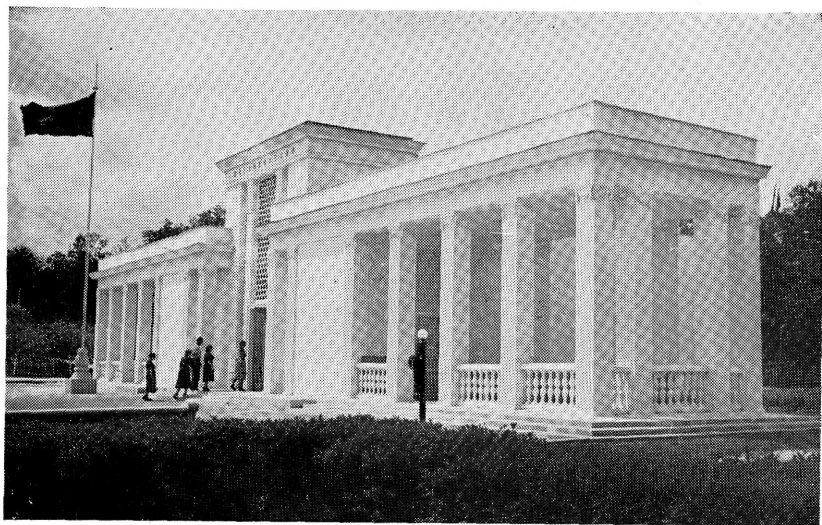


Fig. 1 The Beekeeping Pavilion at the Exhibition of Economic Achievement (page 52)
U.S.S.R.

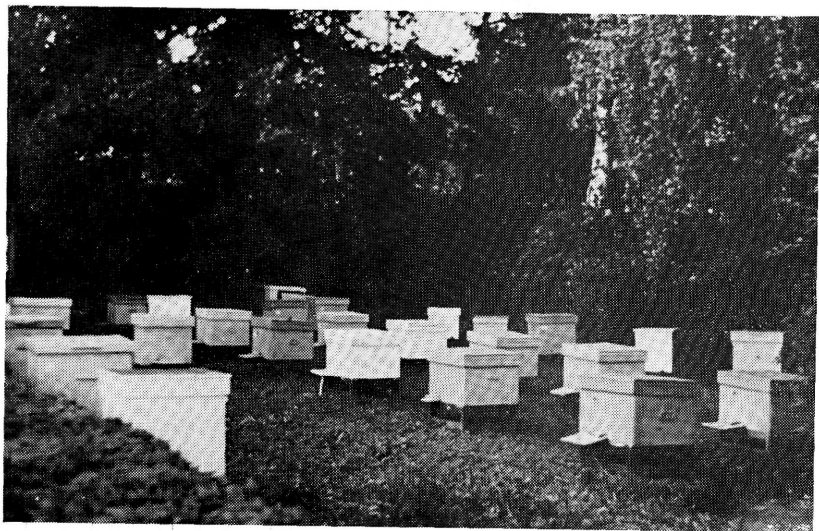


Fig. 2 The Pavilion apiary

Eva Crane



Fig. 3 Some of the Russian audience at the Congress in Moscow
On the right is Mrs. Bikova, in charge of the Beekeeping Pavilion (page 52), and to the left her predecessor Mr. Kostalgodov, then Mr. I. A. Khalifman (page 51) holding the notebook, and beekeepers from Bashkir and Kazan.
U.S.S.R.



Fig. 4 The fountain with the gilded figures
In the foreground Dr. Crane and Dr. Svoboda are together on the left, then Dr. Louveaux and Mrs. Trubetskoi (K. P. Istomina-Tsvetkova), then (in front) Mrs. Bogdanova, Mrs. Bikova, Mr. Faluba, Professor Lazarov and Mr. Petkov (page 49)
U.S.S.R.



Fig. 5 Beekeeping Research Institute at Rybnoe (page 59)

Eva Crane

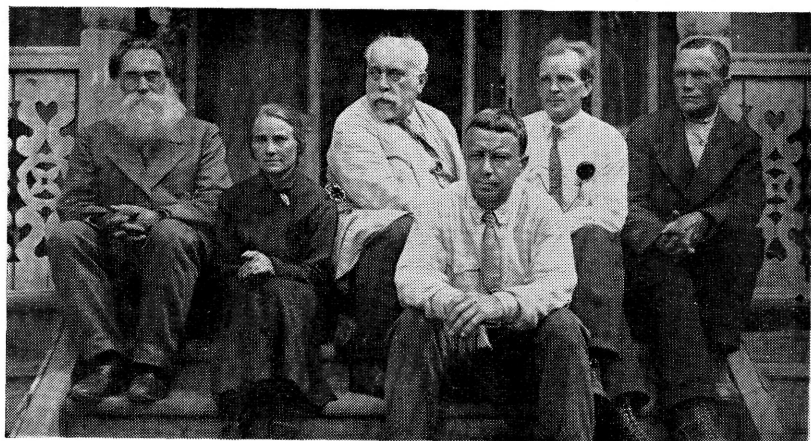


Fig. 6 A photograph taken at the Beekeeping Research Institute during Professor Phillips's visit in 1932 (page 48)
left to right: Brukevich, L. I. Perepelova (Mrs. Tyunin), G. A. Kozhevnikov, A. S. Mikhailov, F. A. Tyunin, A. I. Igoshin
U.S.S.R.



Fig. 7 One of the apiaries of the Beekeeping Research Institute, with a migratory trailer in the background
Eva Crane

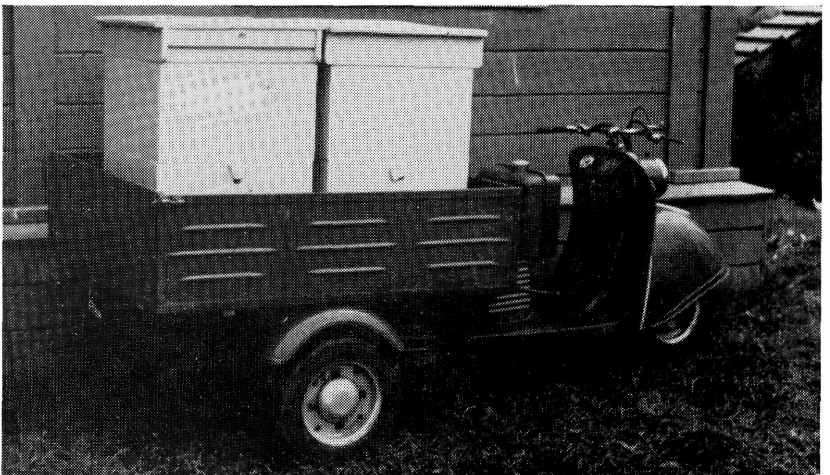


Fig. 8 A beekeeper's 'bicycle built for two' at the Institute

Eva Crane



Fig. 9 Our arrival in Georgia (page 71). The two Rumanian delegates are being greeted on the left; Mr. Mel'nichenko is between them and Dr. Crane, with Mr. Avetisyan behind (in the hat). To the right is Dr. Bornus, then (in front) Dr. Orösi-Pál with the flowers, and Mr. Faluba (page 49)

U.S.S.R.



Fig. 10 Il'ich State Farm apiary in Georgia (page 73)

Eva Crane



Fig. 11 (*top*) Il'ich State Farm
beekeeper with his working
equipment (page 53)

Eva Crane

Fig. 12 (*centre*) In Sukhumi
State Queen-rearing Apiary.
The 'collective' hives have three
mating nuclei at each side of
the main colony, two of the
three entrances being at the side
and the third at the back (page
73)

Eva Crane

Fig. 13 (*bottom*) One of the
hives in Fig. 12 opened

Eva Crane

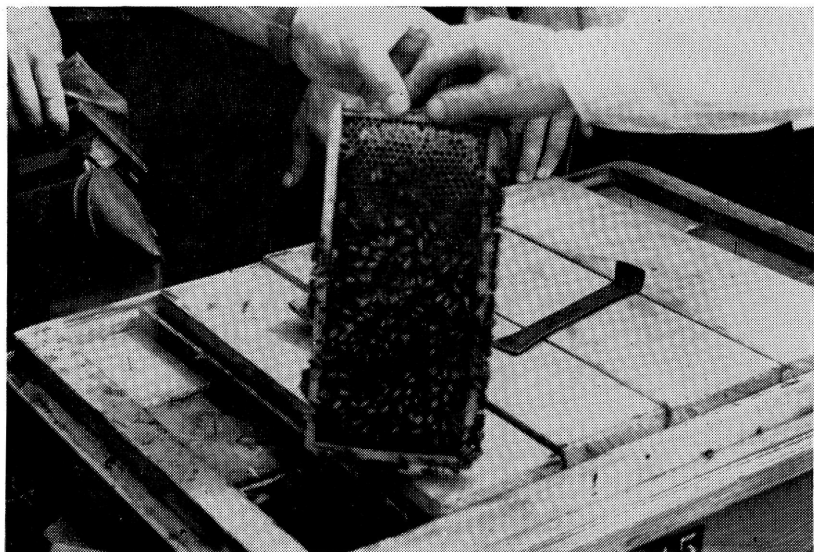




Fig. 14 The beekeeper showing us his Abkhazian bees (page 73) *Eva Crane*
Bee hats for both men and women are of flowered, spotted, or plain cretonne; they are frequently worn with the 'visor' up; in some models this can alternatively be pulled down.
Inset: Part of a Georgian queen's certificate (page 73)



Fig. 15 Georgian hospitality: the overflow party (page 74)

Eva Crane



Fig. 16 Sunday afternoon traffic in Moscow; Sunday is the great shopping day
Eva Crane



Fig. 17 (left) St. Basil's cathedral, Moscow, built in 1550 (page 75) *Eva Crane*
 Fig. 18 (right) Troitsa Monastery; Church of the Holy Spirit (1476), with two towers of the Cathedral of the Assumption behind (page 75) *Eva Crane*